

Ordering information:

E51279: Polymate v1.5 Analysis and Reporting Software

USA Headquarters: Telephone: (1) 502 366 0916 Fax: (1) 502 238 1001
 IRD LLC 4740 Allmond Ave. Louisville, KY 40209, USA
 UK: Telephone: +44 1244 538170 Fax: +44 1244 528900
 IRD UK Ltd. International House, Aviation Park, Flint Road, Saltney Ferry, Chester UK CH4 0GZ
 MEXICO: Telephone: +52.55.5689.8325 Fax: +52 55.5689.8160
 IRD Balancing México S. de R. L. de C.V.; Miguel G. Kramer #29, Col. Atlántida Del. Coyoacán, México, D. F.C.P. 04370
 CANADA: Telephone: 1.450.724.4066 Fax: 1.450.724.4077
 IRD Canada Ltd. 755 Jean-Baptiste-Varin, La Prairie, QC J5R 6P3, Canada

Specifications are subject to change without prior notice.

Copyright © 2009 IRD® All rights reserved.

Publication No: E51279

Email: sales@irdbalancing.com www.irdbalancing.com

www.irdbalancing.com

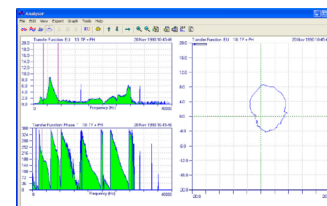
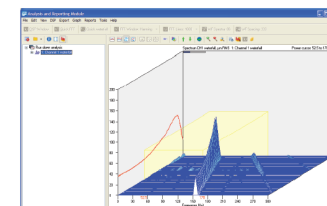
The IRD Balancing Polymate Data Analysis and Reporting Module is a software application tool designed to transfer, display and store the data from the Model 256 and Model 258, 258B & 258V Instruments. The downloaded data may be browsed using a simple tree structure and choosing any record on this tree opens it and shows it in a graph plot on the main section of the window. This graph plot features a large range of display and cursor options and permits the user to add notes and annotations.

IRD Balancing's Polymate Data Analysis and Reporting Module permits you to easily download the data from your instrument and onto the screen of your computer. Data downloaded from either the Model 256 or Model 258 product family is automatically displayed in Polymate's main window, providing a seamless interface between the PC and the instrument. Data is stored in both the original source format and in a binary data stream file, which include all cursors, annotations and notes added by the user. These self-contained files make file management a simple task.

You can use the Polymate Data Analysis and Reporting Module to download data from your Model 256 or 258 using Microsoft ActiveSync or Windows Mobile Device Center under Vista. Vibration Analyzer, Recorder, Check-to-Conformance and Run up/Coast down results files are displayed directly in the main window of the Polymate Analysis and Reporting Module.

Key Features

- Digital Signal Processing – create Spectrum or Waterfall plots of using Fast Fourier Transforms
- Analysis of Check-to-Conformance module data
- Run up Coast down module data analysis
- Consolidation of multiple measurements into a Microsoft® Excel® file
- Automated test report creation in Microsoft Word document format
- Export data to UFF files for use in structural analysis packages
- File download management – specify file locations on PC or network

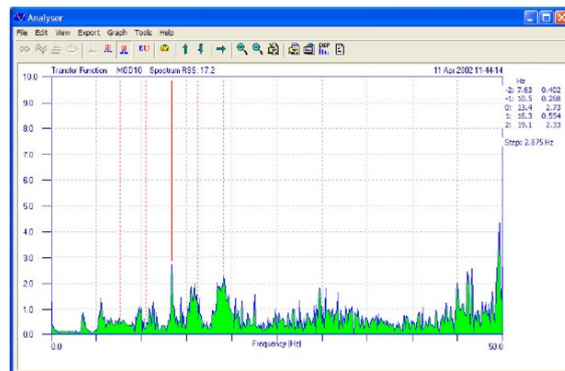


www.irdbalancing.com

POLYMATE v1.5

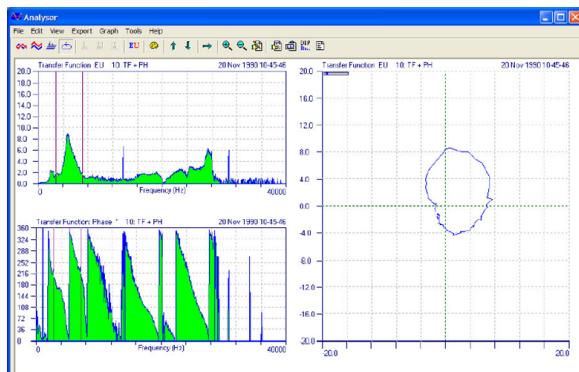
Easy to understand graphical display

- Data can be displayed in single or dual Cartesian plots
- In-built data integration and non-destructive high pass filtering
- Graph displays include a wide range of options such as zooming and magnification
- Dynamic cursor types (harmonic, power, peak-in-band, side-band etc.)
- Unlimited notes and annotations



Powerful interactive graph plots

- Single and multiple time waveform or spectrum
- Waterfall
- Overlay
- Orbit and polar plots (moving zoom function allowing easy traversal of orbit/polar data)
- Bode and Nyquist
- Spectrogram



Customized reporting

Polymate automatically stores measurement data in a customized file stream which embeds the original data and all user added settings such as cursors and ranges, annotations and notes.

- Customizable text based reports can be generated from the data.
- Any record can be output as ASCII text or the graph copied to the clipboard as a bit-map file.

Hardware Requirements

STAND ALONE CONFIGURATION • Analysis and Reporting Module • Storing Data	Recommended	Minimum Requirements
Operating System	Windows 2000 with Service Pack 3+ OR Windows XP Professional with Service Pack 2	
Processor	Intel® Core 2 Duo or better	Pentium IV, 2.1 GHz
RAM	at least 2.0 GB	1.0 GB
Available Disk Space	at least 1.2 GB	100 MB
CD/DVD drive	One (1) required	One (1) required
Video Display	1280 x 1024 or larger	1024 x 768

Data Transfer:

Direct downloading of data from Polymate v1,5 is done via Microsoft ActiveSync® or Windows Mobile® Device Center using USB or RS-232 serial connections.

The following types of data can be imported into IRD Balancing's Polymate:

- Analyzer
- Bump Test
- Frequency Response Function (FRF)
- Check-to-Conformance results files (.csv and .ccr)
- Balancing module files (.txt)
- Recorder module files (.wav)
- Run up Coast down (RuCd) module files (.wav and .csv)
- Universal File Format type 58 (.uff)
- Native Polymate data stream files (.pds)
- Single or multiple column ASCII file format (.txt)
- Microsoft Excel workbooks*