

### General:

This Field Bulletin describes how to load the legacy V1.04 operating system into a 256 that was previously loaded with a later (newer) version operating system.

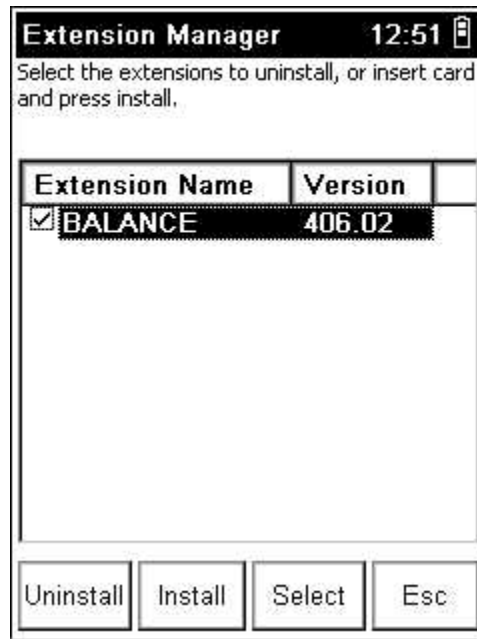
Later versions of operating systems may have files that are newer than V1.04. When loading an older version of software, the newer files may not be replaced and will cause conflicts or errors when trying to run the older software. This procedure tells how to remove all of these files so that the older operating system will be installed correctly.

### Requirements:

- Familiarity with the operation of the 256 Field Balancing Instrument.
- 256 CD-ROM, E46970, with V1.04 Operating System on it.
- IBM compatible computer with CD-ROM Drive and serial port. Operating systems: Win95, Win98, ME, NT, 2000, XP.
- Serial Port Communication Cable. 9 pin DB9 Female to 9 pin DB9 Female.
- Small, flat blade screwdriver
- Paper clip

### Procedure:

1. Turn on the 256 and proceed to the 'Main Menu'.
2. Press the following five keys on the keypad,  
<+-><3><9><8><6>
3. The Extension manager screen should appear as shown.



4. Select the Balance file from the displayed list. A check mark should appear next to the Extension name as shown.

5. Press the 'Uninstall' function key. This will uninstall the Balancing file.
6. Press the 'Esc' key to return to the 'Main Menu'. The 'BALANCING' selection should have disappeared.
7. Turn the 256 power off by pressing the <ON/OFF> key.
8. Place the 256 face down on a soft clean surface so that you can see the battery cover on the rear of the instrument.
9. Use a flat bladed screwdriver to loosen the two screws holding the battery cover to the back of the 256. Remove the battery cover from the 256.



**Figure 1 - Rear of 256 with Battery Cover Open with Paper Clip in Reset Switch**

10. Press the reset switch using a 1/16th inch diameter pin or a straightened paper clip.
11. Place the plastic battery cover into the back of the 256 and secure with the two holding screws.
12. Turn the 256 on by pressing the <ON/OFF> key. The 256 will power up in the Bootloader Configuration screen.

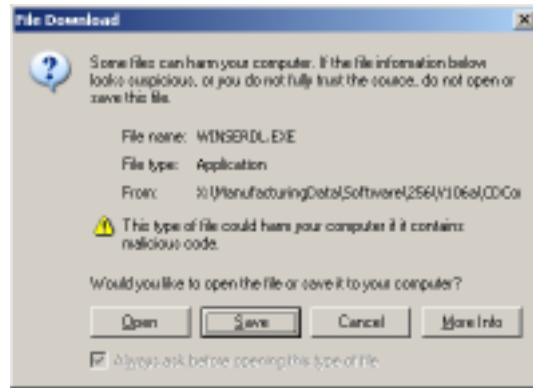
```
Windows CE Bootloader
(c) 1998, 1999
Diagnostic Instruments Ltd,
Unit ID: 00000030C57C

1. Run Windows CE
2. Load OS Image via RS232
3. Load OS Image via PCMCIA

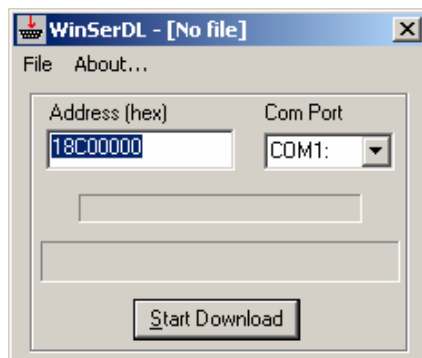
F1 Contrast- F2 Contrast+
Please choose an option
```

13. Connect the Model 256 to the serial port of the computer with the RS-232 cable.
14. Insert the Model 256 CD-ROM disk into the CD-ROM drive of the computer.

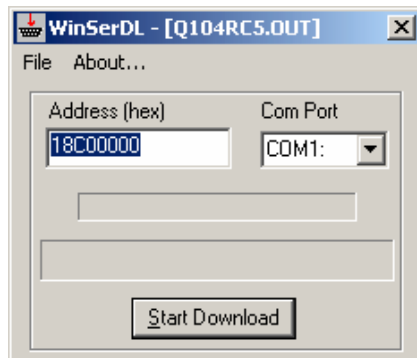
15. The CD-ROM should automatically run and display the 256 Balancing Instrument CD-ROM menu selections in a browser window on your computer.
16. On the left side of the browser window, select ‘[Download V1.04 Op Sys\(Legacy\)](#)’
17. A file download message will appear.



18. Select the ‘Open’ button.
19. The WinSerDL dialog box will appear.

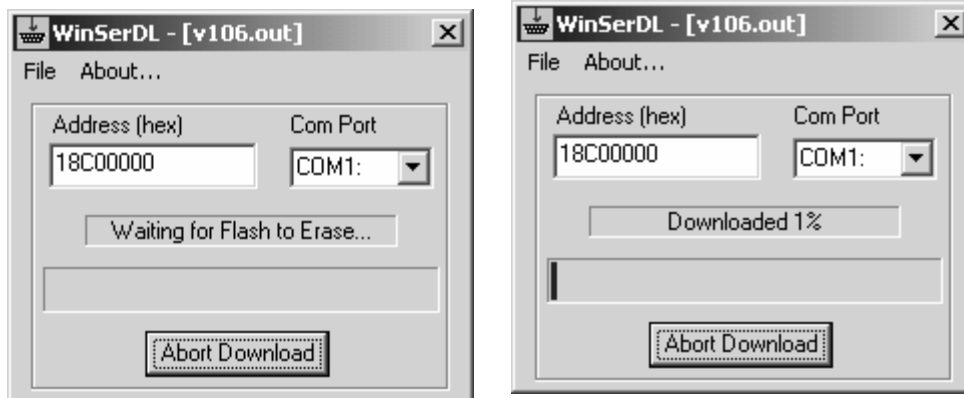


20. Select ‘File’ then ‘Open’. Browse to locate the file Q104RC5.OUT. This should be in a directory called V104.
21. The WinSerDL Box will now have the filename at the top of the box.



22. Check to make sure that the Com Port displayed in the box is the same as the one being used on the computer.
23. Press < 2 > key on the 256 numeric keypad to start the transfer.

24. In the WinSerDL dialog box, choose Start Download. This must be done 5 to 10 seconds of pressing < 2 > on the unit or the Model 256 may timeout. The WinSerDL program clears the OS FLASH memory. A progress bar in the dialog box displays the progress of the transfer. A message also displays at the bottom of the Model 256 screen. Note that this transfer may take as long as 20 minutes.



25. When the message “Transfer Complete” appears on the Model 256 screen, close the WinSerDL dialog box and disconnect the Model 256 from the computer.
26. Turn the 256 off by pressing the < 1 > key.
27. Turn the 256 on by pressing the <ON/OFF> key. The 256 will power up under Windows CE and start the specific operating system that was loaded.
28. Note: It will be necessary to enter the date and time in the instrument. You may also wish to review other instrument settings, like memory, trigger, baud rate, and default units. After checking your settings, you should be ready to begin using the Model 256.
29. To confirm that the correct version was loaded, press the About soft-key on the main Model 256 screen. This will display the Unit ID (which is unique for each 256) and the Firmware Version, which should match the operating-system file just loaded (example: 1.04 for the Q104RC5.out file). Press < Esc > to return to the main screen.
30. The procedure is complete.

IRD Balancing Division Offices  
[www.irdbalancing.com](http://www.irdbalancing.com)  
 email: [sales@irdbalancing.com](mailto:sales@irdbalancing.com)

USA: Worthington, Ohio  
 1.614.431.5256 phone  
 1.614.431.6365 fax

UK: Chester  
 +44 (0) 1244 682 222 phone  
 +44 (0) 1244 677 977 fax